

KOREA

HYUNDAI L&C HEADQUARTER

East Central Tower Building, 1077,
Cheonho-daero, Gangdong-gu, Seoul, Korea (05340)

Tel. +82 2 6364 7488

Email. info.stone@hyundailnc.com

www.hanex.com

USA

HYUNDAI L&C USA LLC

Suite 1100, 2839 Paces Ferry Rd,
Atlanta, GA, USA (30339)

Tel. +1 888 426 9421

Email. info@hanexsolidsurfaces.com

www.hanexsolidsurfaces.com

EUROPE

HYUNDAI L&C EUROPE GMBH

Düsseldorfer Str. 13, Eschborn, Germany (65760)

Tel. +49 619 6586 9010

Email. info@hyundailnc.eu

www.hyundailnc.eu

INDIA

HYUNDAI L&C INDIA PVT LTD

Unit 1303, JMD Regent Square, MR Road,
Gurugram, Haryana, India (122002)

Tel. +91 96679 21158

Email. ask.india@hyundailnc.com

CHINA

HYUNDAI L&C TRADING (SHANGHAI) CO., LTD

Room 603, Mixc Mall A, Wuzhong Rd 1799,
Minhang Dist, Shanghai, China (201103)

Tel. +86 21 3252 2291

Email. sz.wang@hyundaish.com

www.hyundailnc.cn



www.hanex.com

Hanex

Acrylic Solid surface

DESIGN BOOK

Inspired by the Splendor
of Nature



Index

Cascade



CC-001 CASCADE ICE



CC-004 CASCADE BEIGE



CC-007 CASCADE CLOUD



CC-010 CASCADE PURE GREY



CC-002 CASCADE CREAM



CC-003 CASCADE GREY



CC-008 CASCADE WAVE



CC-006 CASCADE BLACK



CC-009 CASCADE HAZE

Venato



VM-002 VENATO SNOW



VM-001 VENATO SPARKLE



VM-003 VENATO BLANC



VM-004 VENATO CHAMPAGNE

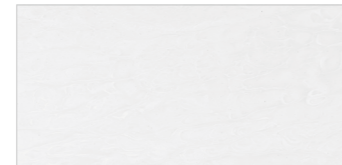


VM-005 VENATO STELLA

Stratum



ST-103 NUCLADO



ST-101 CLARA



ST-102 MARELINHO



ST-201 ROMANO

Bellissimo



BL-302 LINEN WHITE



BL-201 KASHMERE



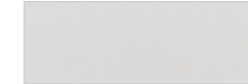
BL-206 SLATE GREY



BL-209 MACASSAR

There may be some slight variation in colors between the printed and the sample.
Hanex Solid Surfaces is committed to delivering products made to perfection.
For more information, please refer to the at www.hanex.com

Concrete



CT-004 COTTON CONCRETE



CT-005 MYSTIC CONCRETE



CT-006 MELANGE CONCRETE



CT-007 VINTAGE CONCRETE



CT-008 CLASSIC CONCRETE



CT-009 DARK CONCRETE



CT-002 MODERN CONCRETE



CT-003 SMOKY CONCRETE

Chip



P-004 SOLARIS



GAM-01 AFTER SNOW



T-204 SILK VIVIAN



D-007 MIST



P-007 BROWN EYES



T-089 VOCALISE



B-031 HELSINKI



T-012 H-ELEGANCE



GAD-007 JUNO



B-040 COPPER BLACK



C-004 CUBIC TRANSBLANC



B-012 OSLO WHITE



D-101 NANTUCKET



T-239 STONE GREY



P-005 NIGHT GLEAM



D-048 CRYSTAL MIRROR



T-050 ICE QUEEN



D-046 LUT DESERT



T-235 THETIS



D-028 BLACK BEAT



D-001 SILVER STONE



D-217 CRISP SNOW



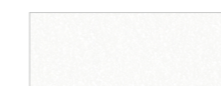
D-012 LIGHT BROWN



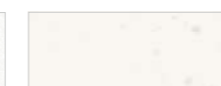
T-228 MINERVA



T-041 BLACK GLASS



D-024 SILVER WHITE



T-237 ICE CUBE



D-003 GOLD BROWN



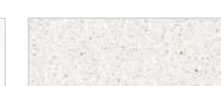
T-025 CHESTNUT



D-015 BLACK HILL



D-025 LIGHT SAND



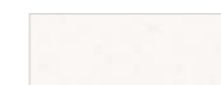
GAD-001 ATHENA



T-206 CHARLES ROSE



D-013 NIGHT LIGHT



D-047 CREAM CHEESE



RE-07 D-TERRAZZO "Upcycling"



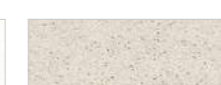
RE-02 NUTS CRUMBLE



RE-05 YURI GREY



T-021 PURE ARCTIC



GAD-003 OMEGA



D-216 CORNMEAL



T-240 DARK NIGHT



C-001 CUBIC WHITE



GAM-004 SAND FLOWER



P-002 METAL GREY



D-215 BLACK HAZE

Solid



S-008 N-WHITE



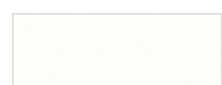
M-006 N-YELLOW



S-002 WHITE



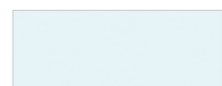
M-005 N-ORANGE



S-001 R-WHITE



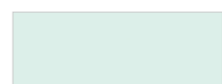
M-003 M-RED



S-014 AQUEOUS



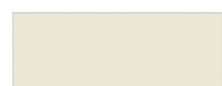
S-019 BROWN FEVER



S-026 MENTA GREEN



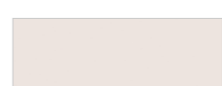
M-012 MARINE BLUE



S-004 IVORY



M-014 GREY ASH



S-025 CHERRY BLOSSOM



M-009 CHARCOAL SKETCH



S-006 GREY



M-007 M-BLACK



S-022 STEEL



S-108 EMPIRE

Benefits of Hanex[®]

Hanex Solid Surface is an acrylic solid surface material which is composed of Methyl Methacrylate (MMA) and Poly Methyl Methacrylate (PMMA) resin filled with Alumina-Trihydrate and other specialized formula to give it a timeless beauty and quality.



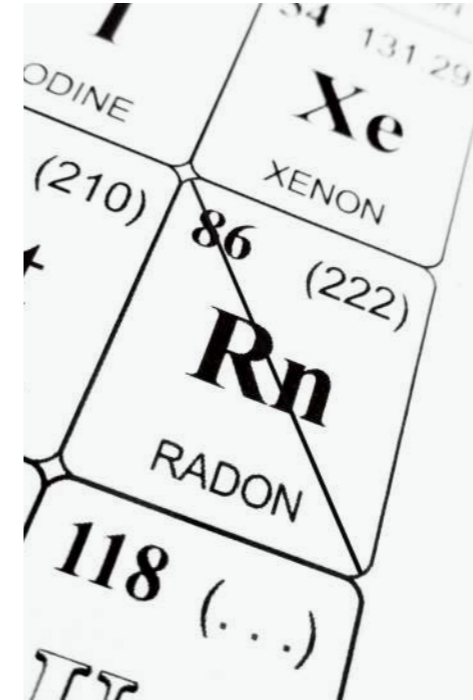
Seamless Design

Sheets can be bonded together with inconspicuous seams. Smooth integration allows large areas without joints.



Recyclable

Hanex is an eco-friendly material, as it is renewable and can be used again in its production process.



No Radon Detected

Hanex is a safe product with no first-class carcinogen radon detected.



Anti-Bacteria

Hanex is capable of withstanding the spread of other harmful germs and bacteria.



Translucent

Various thickness of Hanex exhibit a special translucency when exposed to light.



Thermoform

Sheets can be thermoformed to create curves of shapes of any designs.

Movement Collection

Hanex is an acrylic solid surface material that is resistant to stains and chemicals and can be molded in a variety of designs with unique combinations of acrylic resin and natural materials. It pursues flexible and scalable designs that can be applied to various spaces such as kitchens, hotels, healthcare, and transportation, and increases the completeness of the space.



Inspired by
the Splendor of Nature

Movement Collection



Cascade

Inspired by the natural beauty of cascading waterfalls. Cascade collection features feathery veining with subtle color variation that perfectly resemble the effortless flow of water. Its low color contrast trait allows Hanex to be matched with any interior space.



Venato

Venato is a series of Hanex into the design and manufacture of solid surfaces which are not merely imitation of the real marble. After having reinterpreted the texture and vein of calacatta, Hanex now offers a new way of considering the preciousness of a marble.



Stratum

Stratum series is inspired by nature in a worldly perspective and is full filled with a soft range of colors and unique, organic patterns. You discover the artistic, unconventional scene of the nature. Enjoy the new view of the earth. Create your own, unique and long-lasting atmosphere in the style of the depth and boundlessness of stone.



Bellissimo

Discover the greatness and glory of Bellissimo collection which is inspired by the beauty of the night sky and twilight. The vein expresses the colorful beauty of the sky, and the chip decorates the starlight of the night sky.

Inspired by
the Splendor of Nature

Cascade

Inspired by the natural beauty of cascading waterfalls. Cascade collection features delicate veining and subtle variation that perfectly resemble the effortless flow of water. Its low color contrast trait allows Hanex to be matched with any interior space.



CASCADE

Movement Collection
Cascade



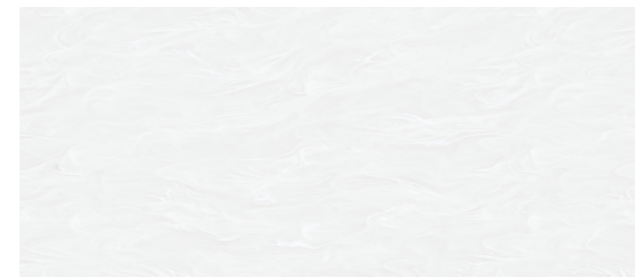
CC-001 | CASCADE ICE



CC-002 | CASCADE CREAM



CC-003 | CASCADE GREY



CC-007 | CASCADE CLOUD



CC-008 | CASCADE WAVE



CC-009 | CASCADE HAZE



CC-004 | CASCADE BEIGE



CC-010 | CASCADE PURE GREY



CC-006 | CASCADE BLACK

10



Full Sheet

CC-001 | CASCADE ICE 12mm(T) X 760mm(W) X 3,680mm(L) / 59.4kg

Movement Collection
Cascade

11

Movement Collection 01 - Cascade Ice



Detail View

CC-001 | CASCADE ICE

12



Full Sheet

13

Movement Collection
Cascade



Movement Collection 01 - Cascade Cream

Detail View

14



Full Sheet

CC-003 | CASCADE GREY 12mm(T) X 760mm(W) X 3,680mm(L) / 59.4kg

Movement Collection
Cascade

15

Movement Collection 01 - Cascade Grey



Detail View

CC-003 | CASCADE GREY

COFFEE INTERVIEW



Full Sheet



Detail View



Full Sheet



Detail View



Full Sheet



Detail View



Full Sheet



Detail View



Full Sheet



Detail View



Full Sheet

Movement Collection
Cascade



Movement Collection 01 - Cascade Pure Grey

Detail View

Inspired by
the Splendor of Nature

Venato

Venato is a series of Hanex into the design and manufacture of solid surfaces which are not merely imitations of the real marble. After having reinterpreted the texture and vein of calacatta, Hanex now offers a new way of considering the preciousness of a noble Italian marble.

Movement Collection
Venato



VM-001 | VENATO SPARKLE



VM-002 | VENATO SNOW



VM-003 | VENATO BLANC



VM-004 | VENATO CHAMPAGNE



VM-005 | VENATO STELLA



Full Sheet

Movement Collection
Venato



Movement Collection 02 - Venato Sparkle

Detail View



Full Sheet



Detail View



Full Sheet

Movement Collection
Venato

Movement Collection 02 - Venato Blanc



Detail View



Full Sheet



Detail View



38

Full Sheet



Movement Collection
Venato

39

Movement Collection 02 - Venato Stella

Detail View

Inspired by
the Splendor of Nature

Stratum

This set of premium solid surfaces is inspired by the wispy movement and strata patterns within rocks and stones. The collection's timeless colors and styles offer incredible vibrancy, beauty and versatility-each can be effortlessly shaped into almost any form or structure by molding, machining or other appropriate processing.

This means they're undeniably ideal for countertops, shower walls and commercial interiors. Beyond that, Stratum can be used for interior accessories like clocks, frames, or chairs, and many others.

STRATUM

Movement Collection
Stratum



ST-101 | CLARA



ST-102 | MARELINHO



ST-103 | NUBLADO



ST-201 | ROMANO



Full Sheet



Detail View



44

Full Sheet

ST-102 | MARELINHO 12mm(T) X 760mm(W) X 3,680mm(L) / 59.4kg

Movement Collection
Stratum

45

Movement Collection 03 - Marelinho

Detail View

ST-102 | MARELINHO



Full Sheet



Detail View



Full Sheet



Detail View



Inspired by
the Splendor of Nature

Bellissimo

The colors within our Bellissimo Collection fuse versatility with beauty. Each of the colors are engineered to help you create an environment that impacts everyday lives.

Discover the greatness and glory of Bellissimo collection which is inspired by the beauty of the night sky and twilight. The vein expresses the colorful beauty of the sky, and the chip decorates the starlight of the night sky.

Movement Collection
Bellissimo



BL-302 | LINEN WHITE



BL-201 | KASHMERE



BL-206 | SLATE GREY



BL-209 | MACASSAR



Full Sheet



Detail View

54



Full Sheet

BL-201 | KASHMERE 12mm(T) X 760mm(W) X 3,680mm(L) / 59.4kg

Movement Collection
Bellissimo

55

Movement Collection 04 - Kashmirere



Detail View

BL-201 | KASHMERE



Full Sheet



Detail View



58

Full Sheet

BL-209 | MACASSAR 12mm(T) X 760mm(W) X 3,680mm(L) / 59.4kg

Movement Collection
Bellissimo

59

Movement Collection 04 - Macassar

Detail View

BL-209 | MACASSAR

Concrete Collections

Infuse your space with a contemporary
ambiance by incorporating the Concrete Collection.



CT-004 COTTON CONCRETE



CT-005 MYSTIC CONCRETE



CT-006 MELANGE CONCRETE



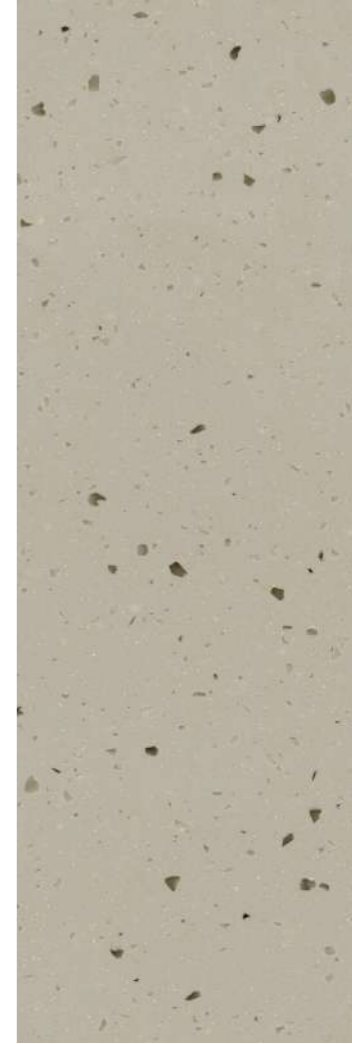
CT-007 VINTAGE CONCRETE



CT-008 CLASSIC CONCRETE



CT-009 DARK CONCRETE



CT-002 MODERN CONCRETE



CT-003 SMOKY CONCRETE

Reference

Reference is where Hanex's various collections are applied, architectural and interior designers around the world. We use Hanex to create diverse cultures.

- 1 Commercial / The Hyundai Seoul (Seoul, Korea)
S-008 N-White
- 2 Commercial / Department Store (Seongnam, Korea)
S-008 N-White
- 3 Corporate / Aekyung Corp(Seoul, Korea)
ST-103 Nublado
- 4 Commercial / The Hyundai Seoul (Seoul, Korea)
S-008 N-White



Inspired by
the Splendor of Nature





1



2



3

- Residential / Enex Show room (Seoul, Korea)
CC-008 Cascade Wave 1
- Commercial / Livart Show room (Seoul, Korea)
ST-101 Clara 2
- Commercial / Department Store (Cheongju, Korea)
T-021 Pure Arctic 3



- Commercial / Department Store (Seongnam, Korea)
CC-007 Cascade Cloud 1
- Commercial / Baskin Robins (Korea)
RE-07 D-Terrazzo 2
- Commercial / Disney Store (Korea)
RE-07 D-Terrazzo 3
- Commercial / Disney Store (Korea)
RE-07 D-Terrazzo 4



- Moka Garden / Space 1(Namyangju, Korea)
S-008 N-white 1
- Moka Play / Space 1(Namyangju, Korea)
M-012 Marine blue 2
- Moka Library / Space 1(Namyangju, Korea)
M-020 Sunkist 3
- Information Desk / Space 1(Namyangju, Korea)
M-007 M-black 4
- Commercial / Department Store(Bucheon, Korea)
CT-006 Melange Concrete 5

Safety Data Sheet

Hanex has various colors and patterns, and is made of the same materials both inside and outside.

It can compensate the disadvantages of laminate and coating. It can also be processed in limitless forms in which is not possible with laminate and natural stone.



Fire-Fighting Measures & Explosion

- **Flammable Properties**

"HANEX" can be combusted only with difficulty. Hazardous gases/vapor produced in fire are carbon monoxide, methyl methacrylate, aldehydes.

- **Extinguishing Media**

Water, Dry chemical, CO2

- **Fire Fighting Instructions**

Keep personnel removed and upwind of fire. Wear self-contained breathing apparatus.



Accidental Release Measures

- **Safeguard (Personnel)**

NOTE : Review FIRE FIGHTING MEASURES and HANDLING (PERSONNEL) sections before proceeding with clean-up. Use appropriate PERSONAL PROTECTIVE during clean up.

- **Spill Clean Up**

Recover undamaged and minimally contaminated material for reuse and reclamation.



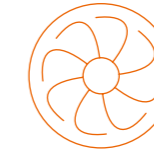
Handling And Storage

- **Handling**

Avoid breathing fumes generated during sawing, routing or drilling. Avoid dust generation.

- **Storage**

Store in a cool place.



Exposure Controls & Personal Protection

- **Engineering Controls (Ventilation)**

Use ventilation that is adequate to keep employee exposure to air borne concentration below exposure limits.

- **Personal Protection**

Protective equipment: EYE/FACE PROTECTION
Wear safety glasses during operations such as sawing, sanding, drilling or routing.



Disposal Consideration

Dispose in accordance with federal, state and local regulation. The owner of the material is responsible for proper waste disposal.



Other Information

The data in this Material Safety Data Sheet relates only to the specific material designated herein and does not relate to use in combination with any other material or in any process.

Responsibility for MSDS : "HANEX" products

Certification

Hanex is highly regarded in the environment-friendly materials market with various environmental related certifications such as NSF, Greenguard, and SCS.



Composition And Information On Ingredients

Component	CAS	%
Polymethylmethacrylate	8011-14-7	>30
Alumina Trihydrate	21645-51-2	<70
Methylmethacrylate (Degradation Product)	80-62-6	<1

Heated above 300 dCe,g "HANEX" can release.





Technical Specification

* Request for available color for exterior cladding

Specificaiton	Result	Test Method
Specific Gravity	1.7	ASTM D792-08
Rockwell Hardness	90	ASTM D785-08
Tensile Strength	43.8 Mpa	ASTM D638-10
Tensile Modulus of Elasticity	12.6 Gpa	ASTM D638-10
Flexural Strength	58.8 Mpa	ASTM D790-10
Flexural Modulus of Elasticity	10.6 GPa	ASTM D790-10
Izod Impact Strength	16 J/m	ASTM D256-10
Water Absorption	0.036 % (24h Immersion)	ASTM D570-98
Desnsity	1.7 g/cm2	ASTM D792-08
Heat Resistance Test	No Defects	JIS K 6902 : 2008
Hot Water Resistance Test	No Defects	JIS K 6902 : 2008
Deflection Temperature Under (1.82MPa)	115 oC	ASTM D648-07
Thermal Expansion	3.93 x 10-5 1/oC	JIS K 6911 : 2006
Compressive Strength	118 Mpa	ISO 604 : 2002
Light Resistance	No Effect	NEMA LD3 3.03
Boiling Water	No Effect	NEMA LD3 3.05
Ball Impact Resistance	No Fracture on 3 Impacts	NEMA LD3 3.08
Resistance to Impact by Large Diameter Ball	Max Impact Height : 2m	ISO 4586-2
Point Impact Resistance	No Cracks or Chips	ANSI Z124.3 4.3
Stain Resistance Test	Pass	ANSI Z124.3 5.2
Wear and Cleanability Test	Pass	ANSI Z124.3 5.3
Cigarette Test	Pass	ANSI Z124.3 5.4
European Railway Standard for Fire Safety	R1, HL3	EN 45545
Resistance to Bacteria	No Growth	ASTM G22
Resistance to Fungi	No Growth	ASTM G21
European Classification Standard	B-s1, d0	EN 13501-1
Façade Panel	ETA (European Technical Assessment)	DIBT
Weatherability (1,000 Hr) - Special Color Only	No Visual Change	ASTM G155

Global Network

Hanex is ready to meet you anytime from all over the world.

-  **Central Office**
-  **Plant**
-  **Showroom**
-  **Distributor**



Global Network

Central Office

HYUNDAI L&C HEADQUARTER

East Central Tower Building, 1077, Cheonho-daero, Gangdong-gu, Seoul, Korea (05340)

Tel: +82 2 6364 7488 / E-mail: info.stone@hyundailnc.com / Web: www.hyundailnc.com

DESIGN CENTER

East Central Tower Building, 1077, Cheonho-daero, Gangdong-Gu, Seoul, Korea (05340)

Tel: +82 80 729 8272 / E-mail: info.stone@hyundailnc.com

R&D CENTER

37, Buganggeumho-ro, Bugang-myeon, Sejong-si, Korea (30074)

Tel: +82 44 279 8000 / E-mail: info.stone@hyundailnc.com

HYUNDAI L&C USA LLC

Suite 1100, 2839 Paces Ferry Rd, Atlanta, GA, USA (30339)

Tel: +1 888 426 9421 / E-mail: info@hanexsolidsurfaces.com / Web: www.hanexsolidsurfaces.com

HYUNDAI L&C EUROPE GMBH

Düsseldorfer Str. 13, Eschborn, Germany (65760)

Tel: +49 619 6586 9010 / E-mail: info@hyundailnc.eu / Web: hyundailnc.eu

HYUNDAI L&C INDIA PVT LTD

Unit No. 1303, JMD Regent Square Building, MG Road, Gurugram, Haryana, India (122001)

Tel: +91 96679 21158 / E-mail: ask.india@hyundailnc.com

HYUNDAI L&C TRADING (SHANGHAI) CO., LTD

Room 603, Mixc Mall A, Wuzhong Road 1799, MinHang District, Shanghai, China

Tel: +86 21 3252 2291 / E-mail: sz.wang@hyundaish.com / Web: hyundailnc.cn

Plant

L-TECH, SEJONG PLANT

37, Buganggeumho-ro, Bugang-myeon, Sejong-si, Korea (30074)

Tel: +82 44 279 8000

C-TECH, SEJONG PLANT

79-20, Geumhoangol-gil, Bugang-myeon, Sejong-si, Korea (30077)

Tel: +82 44 279 8000

AMERICAN SURFACING MATERIALS

2101 Baker Blvd, Temple, TX, USA (76501)

Tel: +1 254 935 2601

HYUNDAI L&C CANADA

Address: 2860 Innovation Drive, London, Ontario, Canada (N6M 0C5)

Tel: +1 519 951 3154 / E-mail: info@hanstone.ca / Web: hanstone.ca

Showroom

GALLERY Q

714, Nonhyeon-ro, Gangnam-gu, Seoul, Korea (06051)

Tel: +82 2 508 4485

VAUGHAN SHOWROOM

150 Caldari Road, Vaughan, Ontario (L4K 4L1)

Tel: +1 905 660 3770

WEST COAST

16031 Carmenita Rd, Cerritos, CA, USA (90703)

Tel: +1 562 6230600

SOUTHEAST

335 Riverside Parkway, Austell, GA, USA (30168)

Tel: +1 678 398 2513

MIDWEST

2833 Charter St, Columbus, OH, USA (43228)

Tel: +1 614 9690100

MID-ATLANTIC

135 Hartman Rd, North Wales, PA, USA (19454)

Tel: +1 215 646 2546

NEW ENGLAND

292 Lonczak Rd, Chicopee, MA, USA (01022)

Tel: +1 413 240 4400